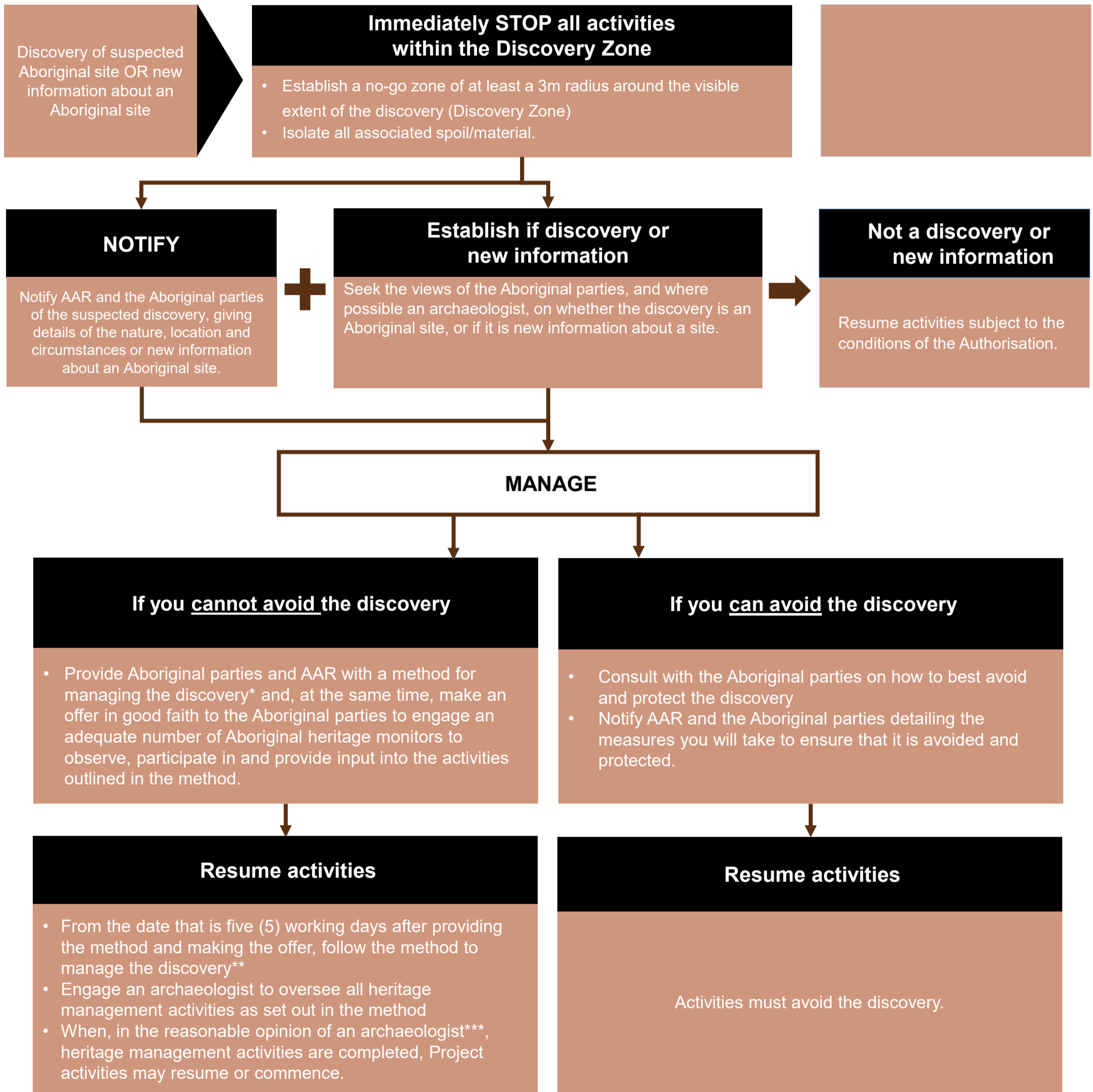


# Aboriginal Sites Discovery Protocol

Pursuant to sections 20A(1), 21(2) and 23(3) of the Aboriginal Heritage Act 1988 (SA)

- The purpose of this document is to provide a ‘stop – notify – manage’ process.
- Where impacts to Aboriginal sites are unavoidable, they should be mitigated to the extent possible.
- For discoveries of Aboriginal objects that do not form part of an Aboriginal site, refer to the Authorisation.
- Aboriginal parties are Traditional Owners and/or Aboriginal organisations specified by AAR for the purposes of the Authorisation.
- Defined terms in the Act and the Authorisation have the same meaning in this protocol.
- If there is any disagreement about the application or interpretation of this protocol, or any part of it, AAR will definitively decide the matter.



\*This method should be prepared by an archaeologist in consultation with the Aboriginal parties. The method must comply with this protocol, the Authorisation and the Act. Guidance may be sought from AAR. AAR may provide feedback on any proposed method, which must be considered by the Authorised Parties.

\*\*AAR may advise in writing that activities may commence earlier.

\*\*\*Where there is a dispute about whether heritage management activities are completed, AAR will definitively decide the matter.

# Aboriginal Remains Discovery Protocol

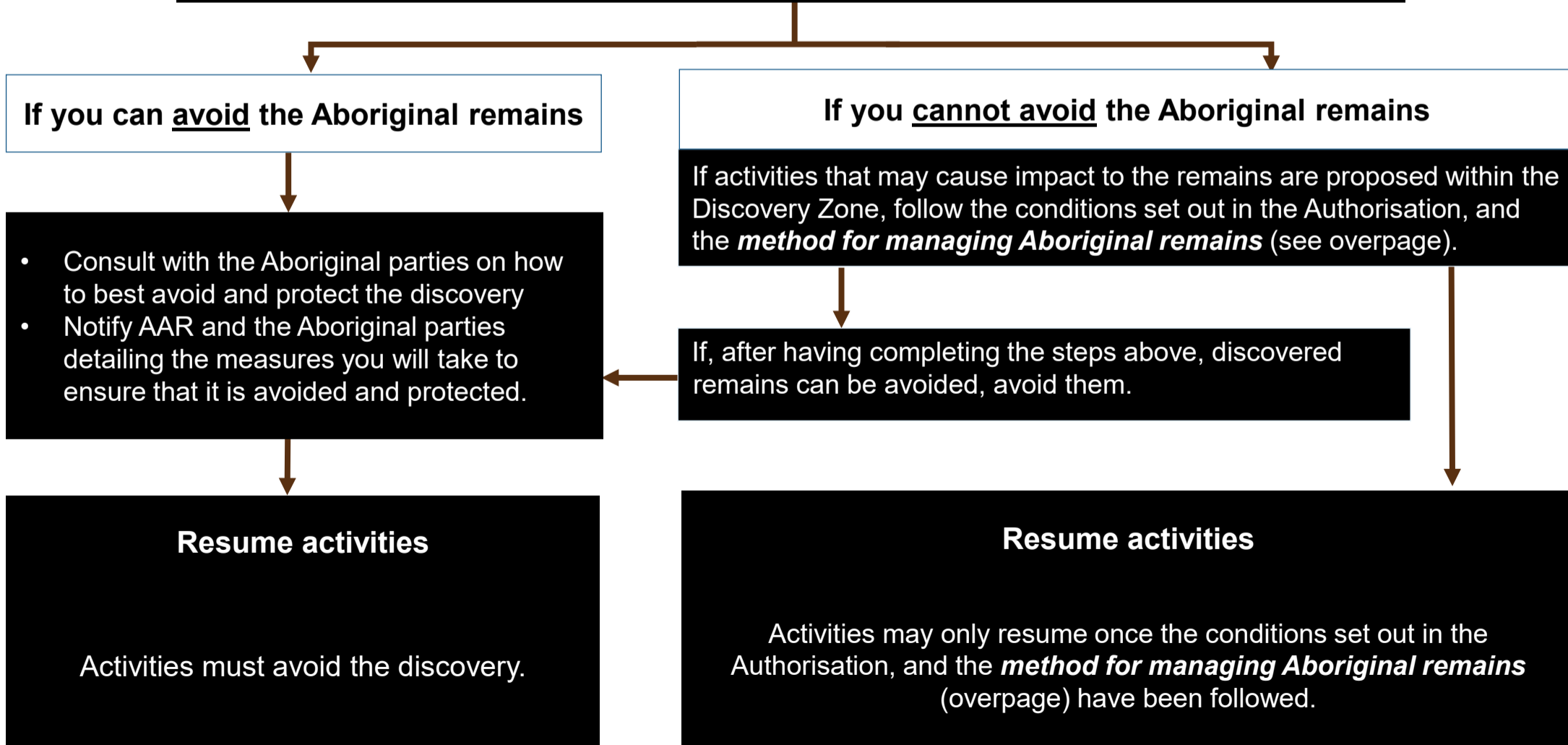
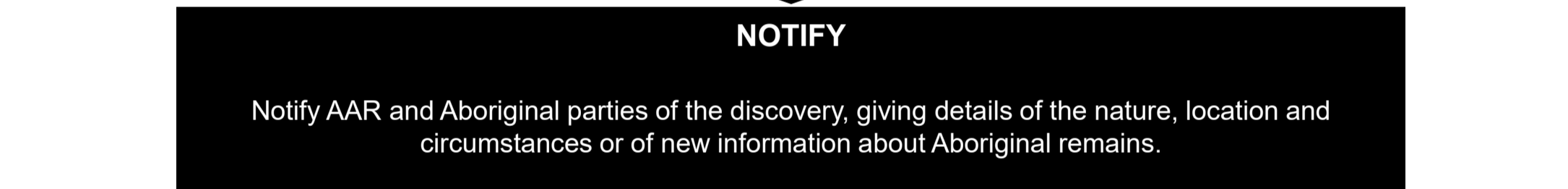
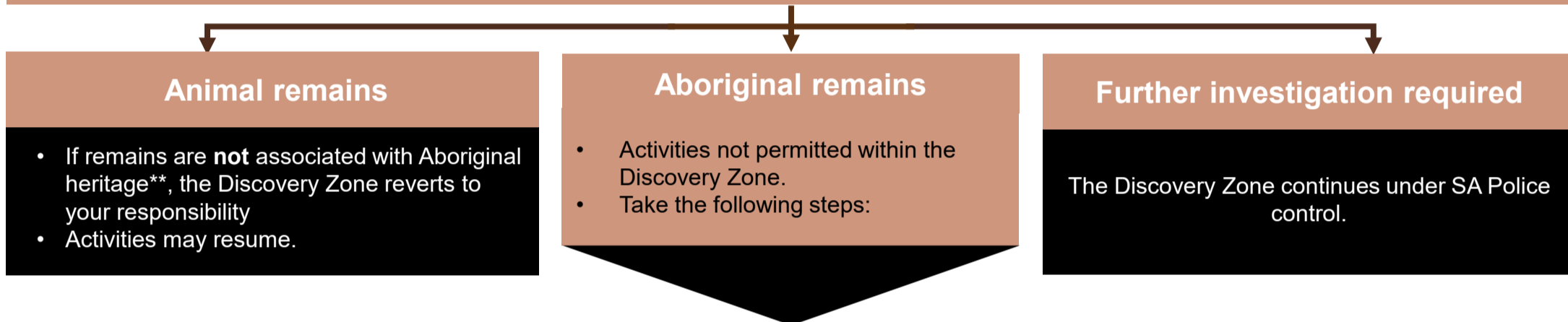
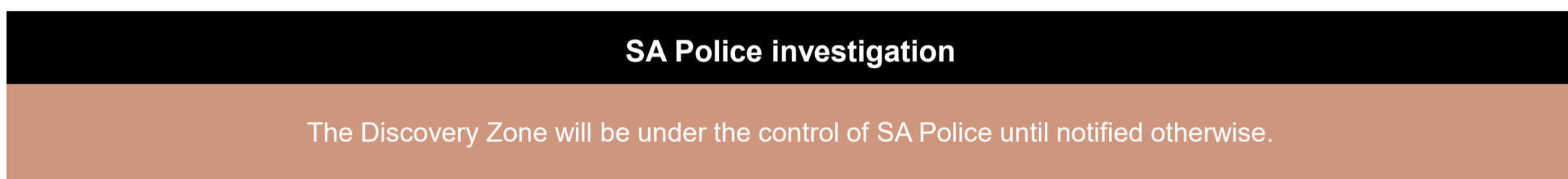
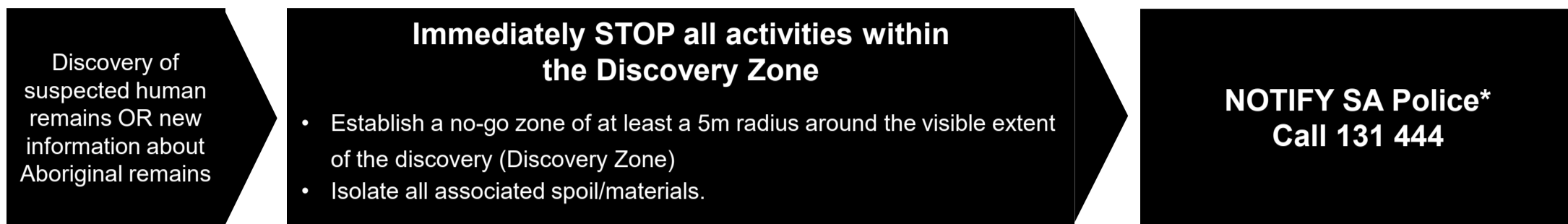
Pursuant to sections 20A(1), 21(2) and 23(3) of the Aboriginal Heritage Act 1988 (SA)

- The purpose of this document is to provide a 'stop – notify – manage' process.
- In all cases where human remains are discovered, this must be immediately reported to SA Police. Do not interfere with the remains.
- Human remains must be always treated with dignity and respect.
- Where impacts to remains are unavoidable, this should be mitigated to the extent possible.
- Aboriginal parties are Traditional Owners and/or Aboriginal organisations specified by AAR for the purposes of the Authorisation.
- Defined terms in the Act and the Authorisation have the same meaning in this protocol.
- If there is any disagreement about the application or interpretation of this protocol including the method overpage or any part of them, AAR will definitively decide the matter.

## Responsible parties

You - Authorised party

SA Police



\*If it is new information about previously-reported Aboriginal remains, notification to SA Police is not required

\*\*Animal remains, particularly those of native animals, found in association with Aboriginal objects (e.g. stone tools) and/or other cultural materials (e.g. charcoal, shell material, burnt stones) may indicate the presence of an Aboriginal site. If such a discovery is made, use the **Aboriginal Sites Discovery Protocol**.

# Method for managing Aboriginal remains

Where discovered Aboriginal remains cannot be avoided, or where some impacts to remains will likely occur, an Authorised Party must:

1. Consult with the Aboriginal parties about the proposed management of the remains that may be impacted.
2. Advise AAR and the Aboriginal parties in writing:
  - that you have assessed that avoiding the remains is not reasonably possible
  - of the justification for your decision
  - of the outcomes of your consultation with the Aboriginal parties in deciding how the remains will be managed.
3. Provide Aboriginal parties and AAR with a method for managing the discovery and make an offer in good faith to the Aboriginal parties to engage an adequate number of heritage monitors to observe, participate in and provide input into the heritage management activities outlined in the method. The method should be prepared by an archaeologist in consultation with the Aboriginal parties. The method must comply with this protocol, the Authorisation and the Act and must include the following:
  - careful excavation and removal of soil in layers of no more than approximately 10 cm deep using hand trowel, shovel or small excavator within the Discovery Zone. This excavation must occur until – in the view of an archaeologist – culturally sterile layers or bedrock is reached.
  - provision for an archaeologist to be engaged to oversee all heritage management activities.
4. From the date that is not less than five (5) working days from the date of the provision of the method and making of the offer outlined in Step 3, follow the method to manage the discovery. AAR may advise in writing that heritage management activities may commence earlier.
5. When, in the reasonable opinion of an archaeologist, heritage management activities set out in the method are completed, Project activities may resume or commence.

## Note:

- Guidance may be sought from AAR in preparing any proposed method. AAR may provide feedback on any proposed method, which must be considered by the Authorised Parties.
- In the event of a dispute between the parties in relation to whether the heritage management activities are completed AAR will conclusively decide the matter.